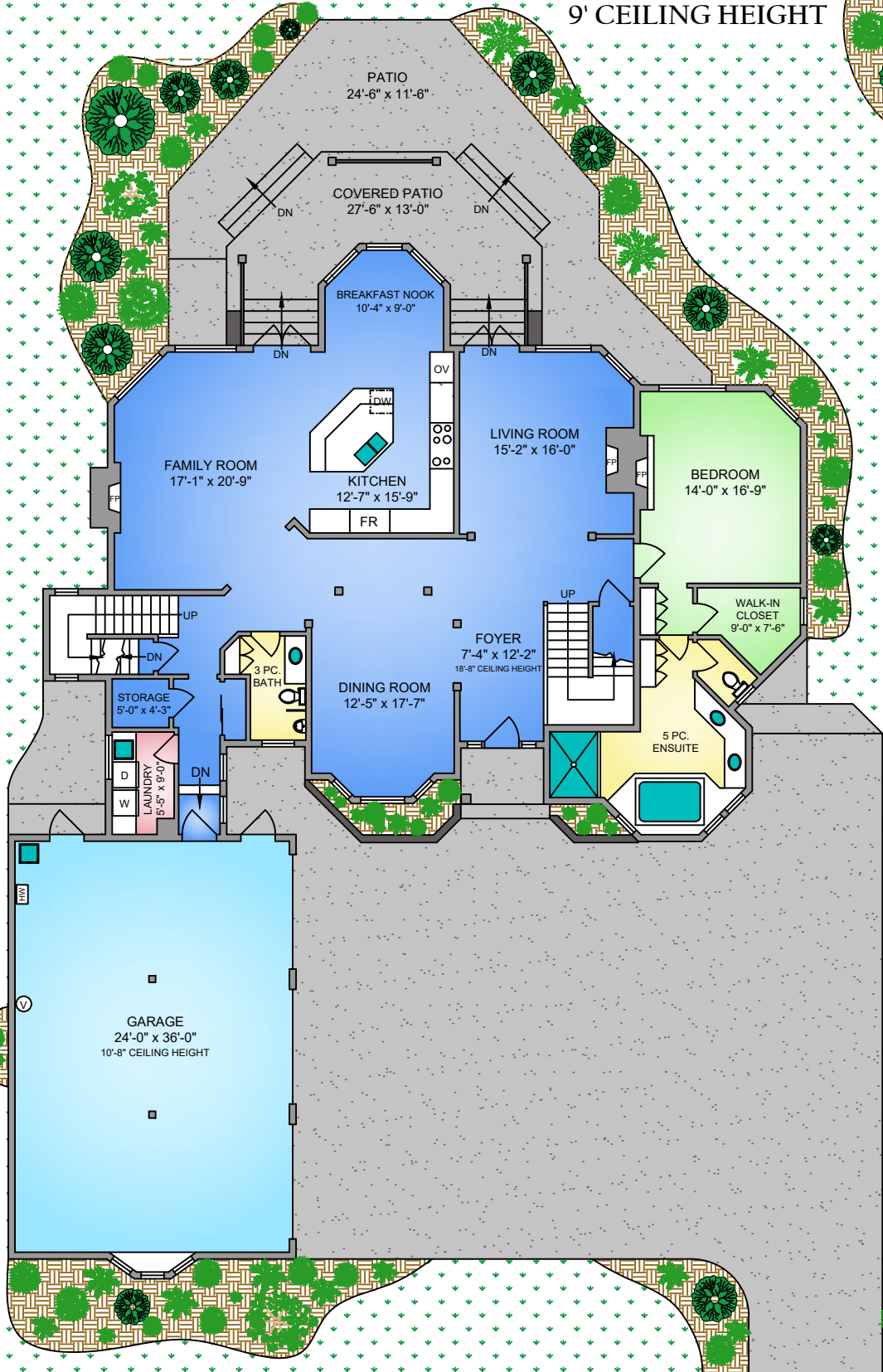


# MAIN FLOOR

## 2424 SQ. FT.

### 9' CEILING HEIGHT



*Lisa Williams* Sotheby's Canada  
INTERNATIONAL REALTY

NORTH



0' 5' 10'  
SCALE



250-884-9753  
matt@propermeasure.com  
www.propermeasure.com

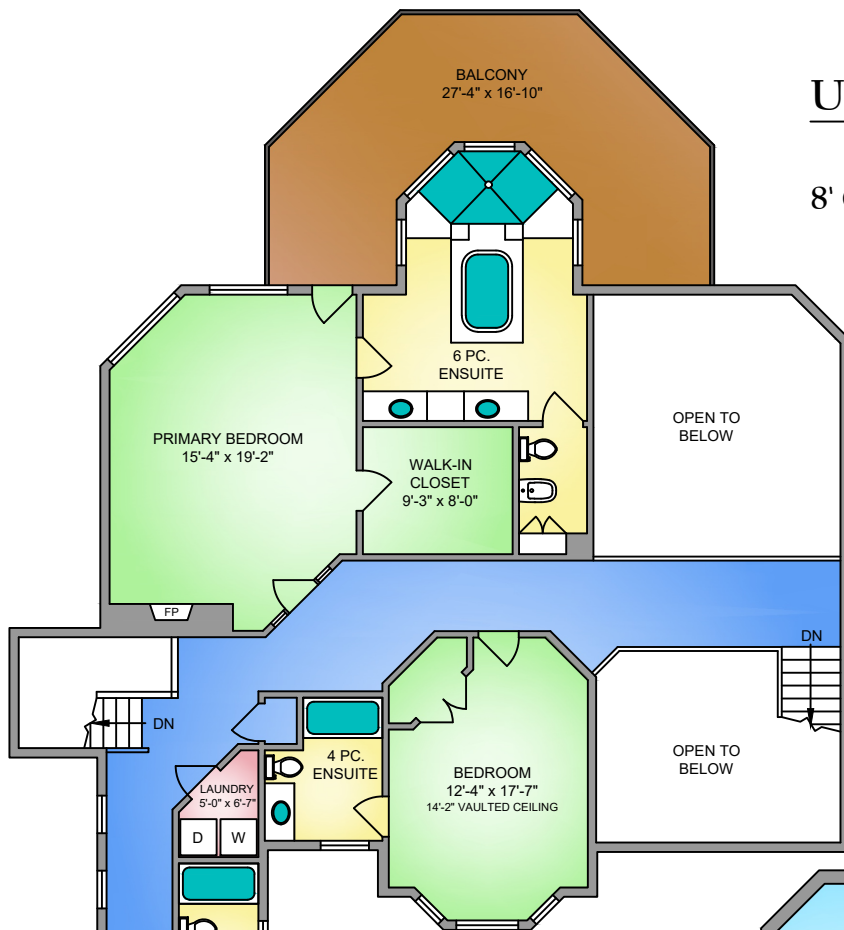
1867 MARINA WAY

APRIL 22, 2026

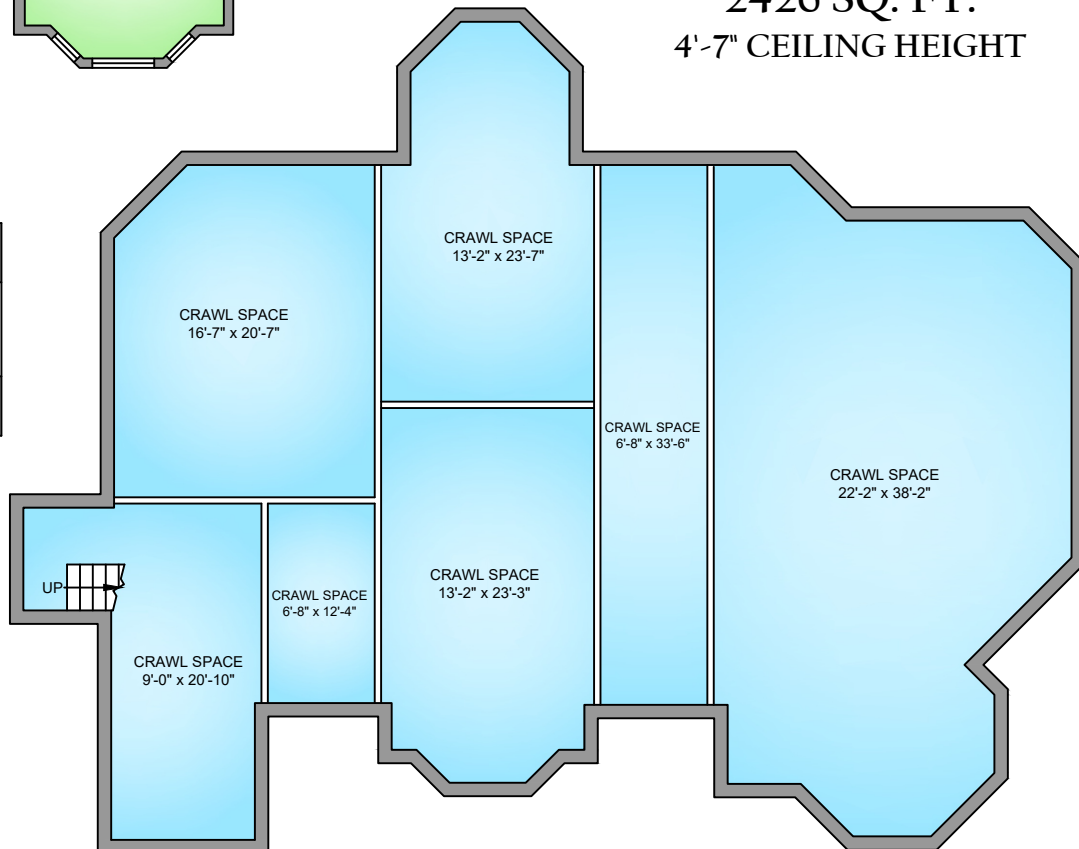
PREPARED FOR THE EXCLUSIVE USE OF LISA WILLIAMS  
PLANS MAY NOT BE 100% ACCURATE, IF CRITICAL BUYER TO VERIFY.

FLOOR	AREA (SQ. FT.)		
	FINISHED	GARAGE	DECK / PATIO
MAIN	2424	933	680
UPPER	1877	-	302
<b>TOTAL</b>	<b>4301</b>	<b>933</b>	<b>982</b>

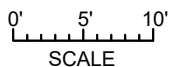
**UPPER FLOOR**  
**1877 SQ. FT.**  
**8' CEILING HEIGHT**



**CRAWL**  
**2426 SQ. FT.**  
**4'-7" CEILING HEIGHT**



NORTH



*Lisa Williams* Sotheby's | Canada  
 INTERNATIONAL REALTY

**PROPERMEASURE**  
 PRECISION

250-884-9753  
 matt@propermeasure.com  
 www.propermeasure.com

1867 MARINA WAY			
APRIL 22, 2026			
PREPARED FOR THE EXCLUSIVE USE OF LISA WILLIAMS			
PLANS MAY NOT BE 100% ACCURATE, IF CRITICAL BUYER TO VERIFY.			
FLOOR	AREA (SQ. FT.)		
	FINISHED	GARAGE	DECK / PATIO
MAIN	2424	933	680
UPPER	1877	-	302
<b>TOTAL</b>	<b>4301</b>	<b>933</b>	<b>982</b>