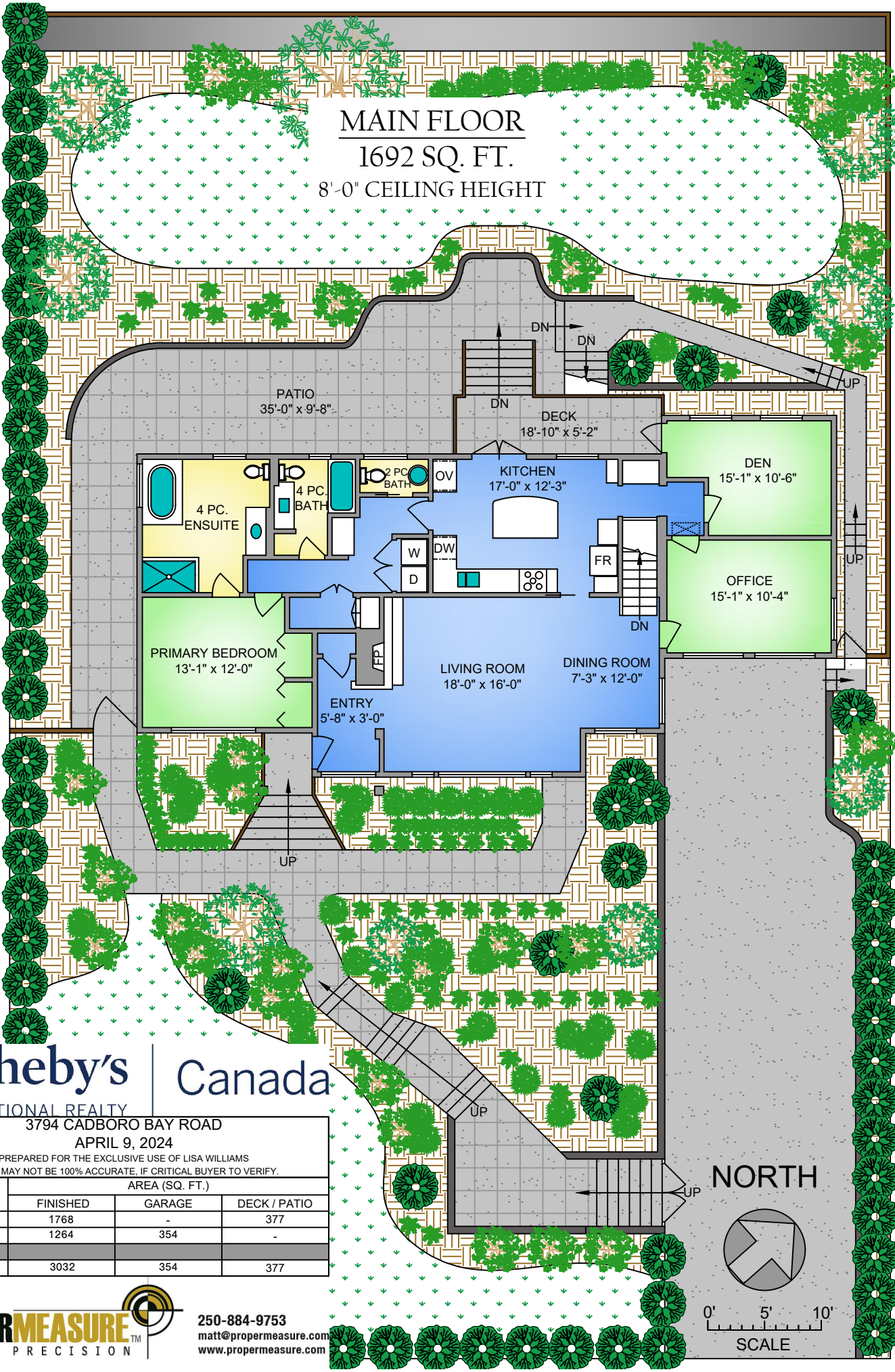


# MAIN FLOOR

1692 SQ. FT.

8'-0" CEILING HEIGHT



**Sotheby's** | **Canada**

INTERNATIONAL REALTY

3794 CADBORO BAY ROAD

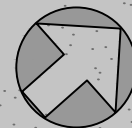
APRIL 9, 2024

PREPARED FOR THE EXCLUSIVE USE OF LISA WILLIAMS

PLANS MAY NOT BE 100% ACCURATE. IF CRITICAL BUYER TO VERIFY.

FLOOR	AREA (SQ. FT.)		
	FINISHED	GARAGE	DECK / PATIO
MAIN	1768	-	377
LOWER	1264	354	-
TOTAL	3032	354	377

NORTH



0' 5' 10'

SCALE

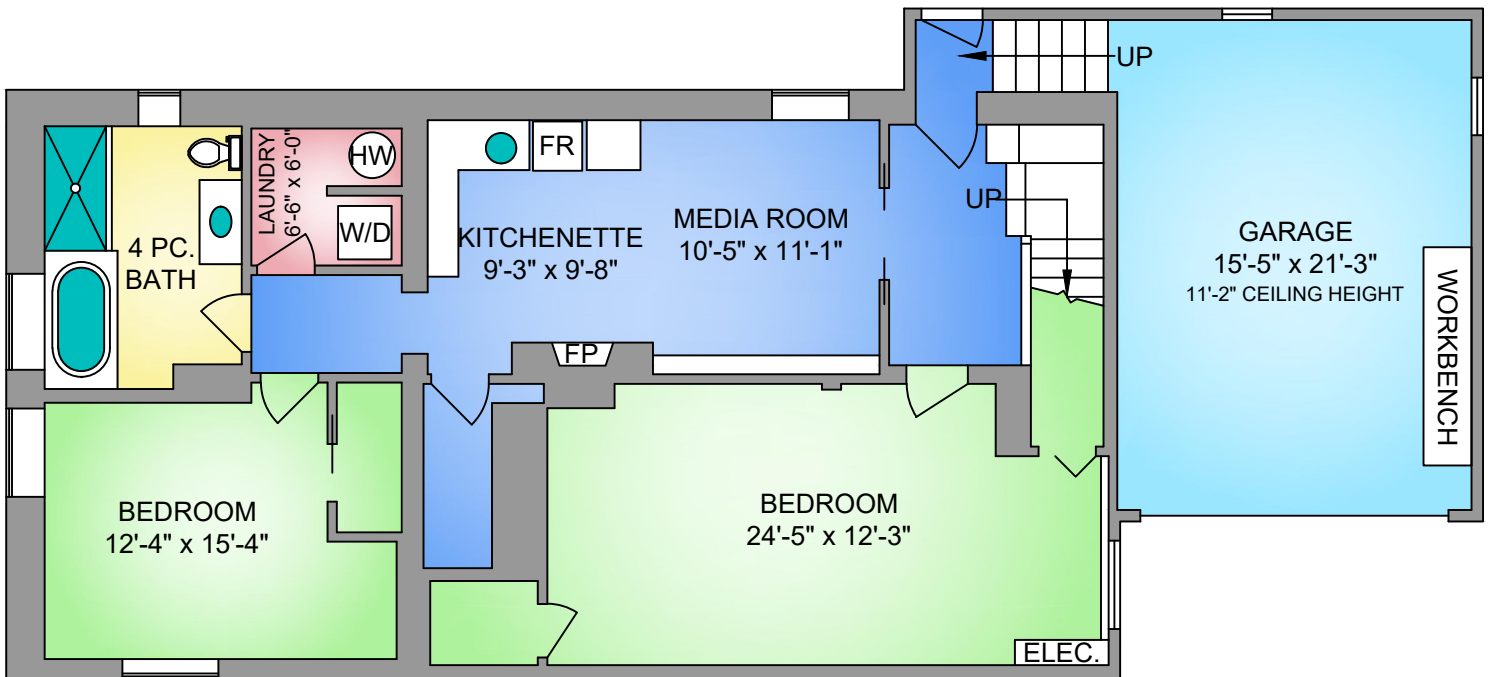


250-884-9753

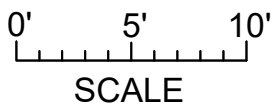
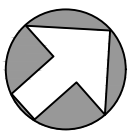
matt@propermeasure.com

www.propermeasure.com

LOWER FLOOR  
1269 SQ. FT.  
7'-8" CEILING HEIGHT



NORTH



250-884-9753  
matt@propermeasure.com  
www.propermeasure.com

**Sotheby's** | Canada

INTERNATIONAL REALTY

3794 CADBORO BAY ROAD

APRIL 9, 2024

PREPARED FOR THE EXCLUSIVE USE OF LISA WILLIAMS  
PLANS MAY NOT BE 100% ACCURATE, IF CRITICAL BUYER TO VERIFY.

FLOOR	AREA (SQ. FT.)		
	FINISHED	GARAGE	DECK / PATIO
MAIN	1768	-	377
LOWER	1264	354	-
<b>TOTAL</b>	<b>3032</b>	<b>354</b>	<b>377</b>