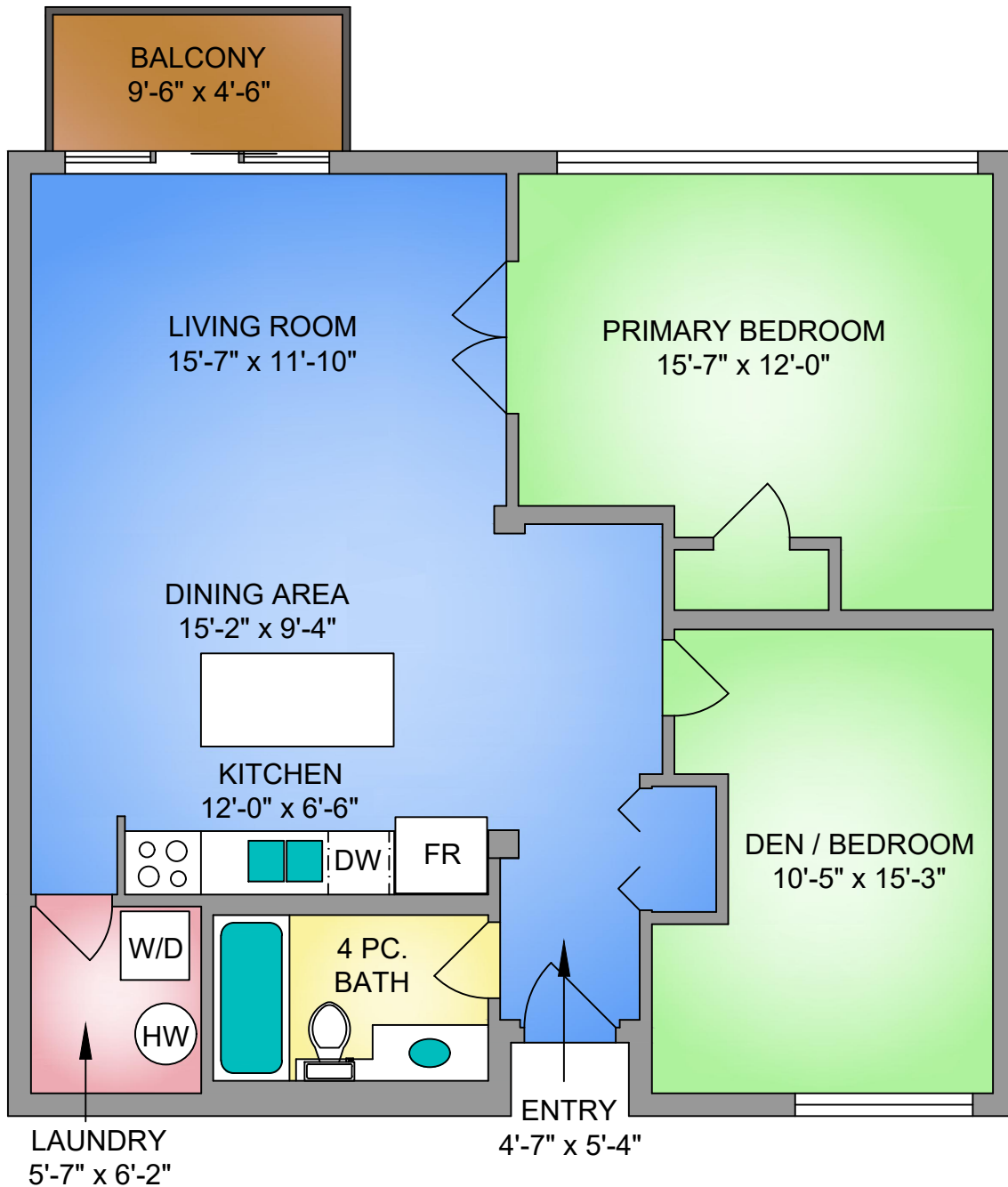


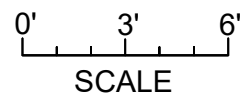
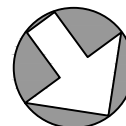
UNIT 209 - 455 SITKUM ROAD

994 SQ. FT.

10' CEILING HEIGHT



NORTH



Lisa Williams Sotheby's | Canada
INTERNATIONAL REALTY

PROPER MEASURE™
PRECISION

250-884-9753
matt@propermeasure.com
www.propermeasure.com

UNIT 209 - 455 SITKUM ROAD JANUARY 19, 2024		
PREPARED FOR THE EXCLUSIVE USE OF LISA WILLIAMS PLANS MAY NOT BE 100% ACCURATE, IF CRITICAL BUYER TO VERIFY.		
FLOOR	AREA (SQ. FT.)	
	FINISHED	BALCONY
SECOND	994	43