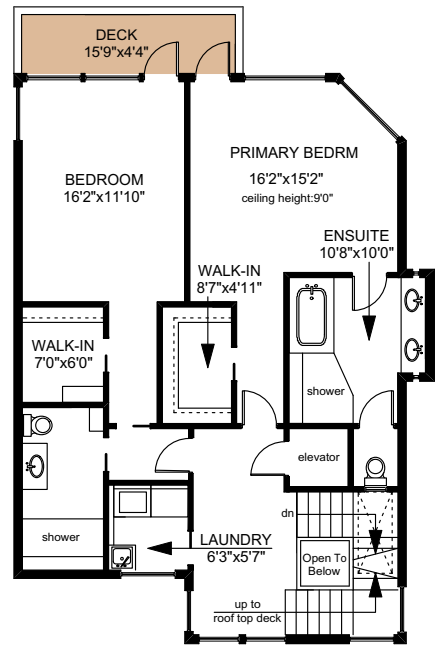
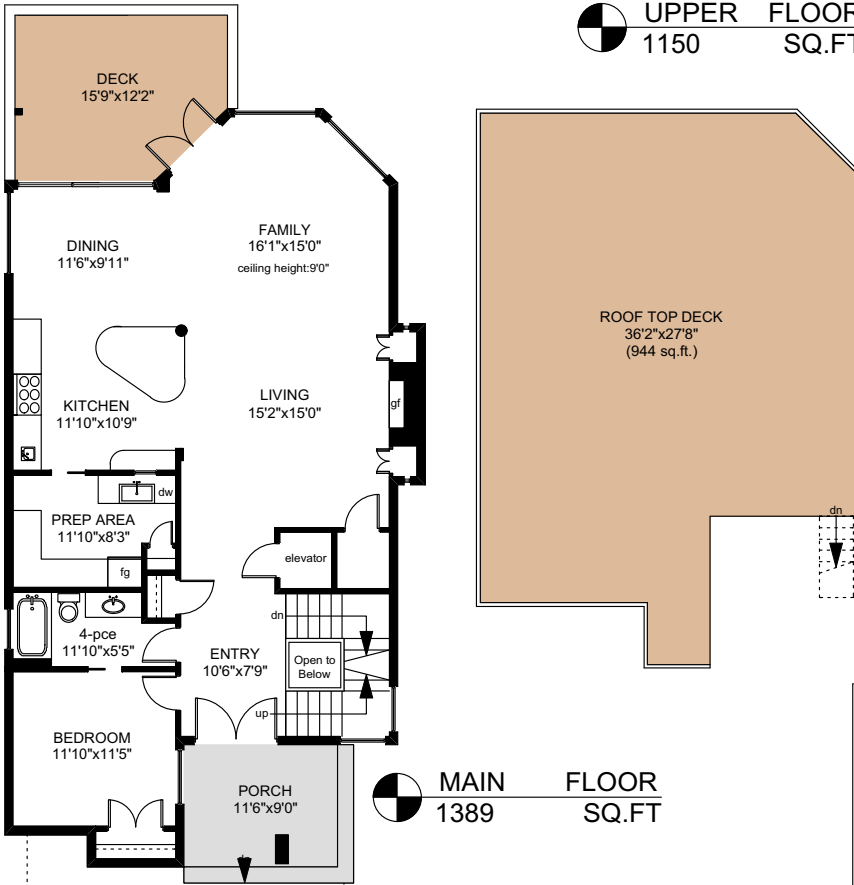
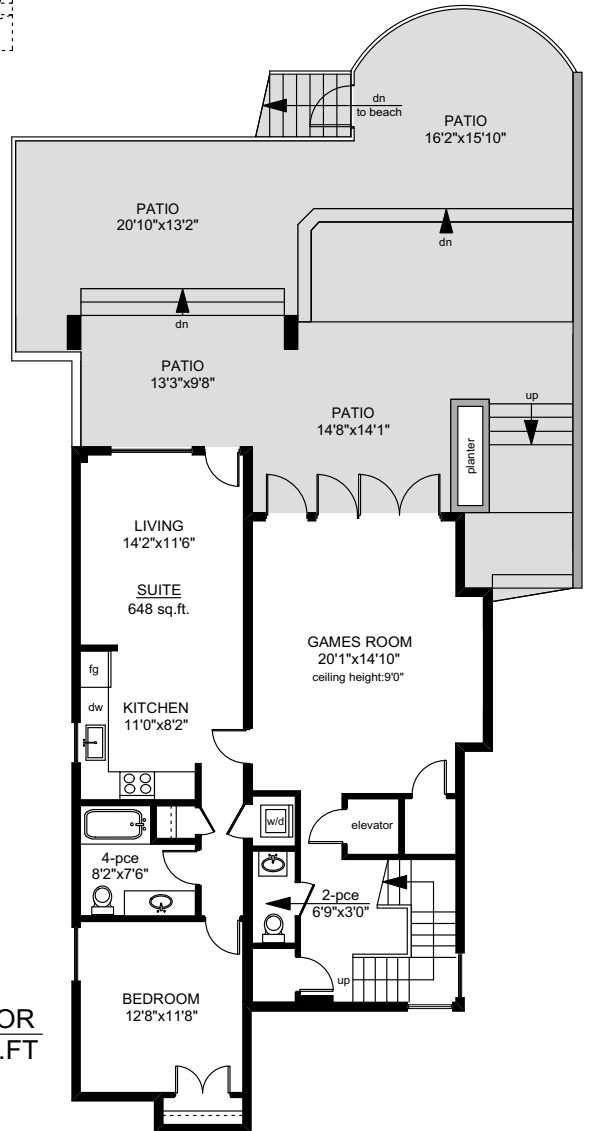
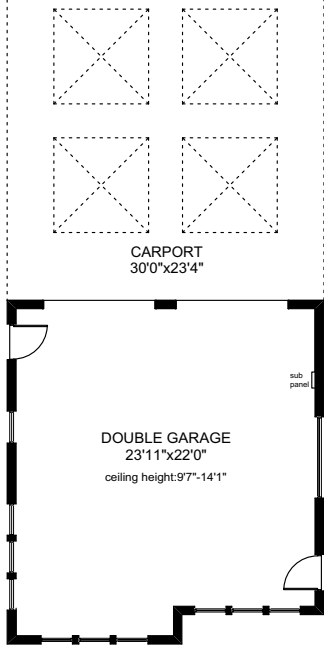


# 159 ROBERTSON STREET

UPPER FLOOR  
1150 SQ.FT

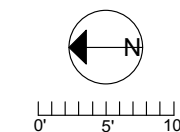


MAIN FLOOR  
1389 SQ.FT



LOWER FLOOR  
1260 SQ.FT

	FINISHED SQ. FT.	UNFINISHED SQ. FT.	TOTAL SQ. FT.
MAIN	1389	0	1389
UPPER	1150	0	1150
LOWER	1260	0	1260
TOTAL	3799	0	3799
GARAGE	0	569	569
CARPORT	0	641	641
DECKS	0	1189	1189
PATIOS	0	1099	1099



PREPARED FOR THE EXCLUSIVE USE OF  
LISA WILLIAMS OF  
SOTHEBY'S INTERNATIONAL REALTY CANADA

MEASURED ON: 09/30/23  
DRAWING FILE: 14137

**Taf** Measure VICTORIA, B.C.  
Ph. 883.8894  
www.tafmeasure.com