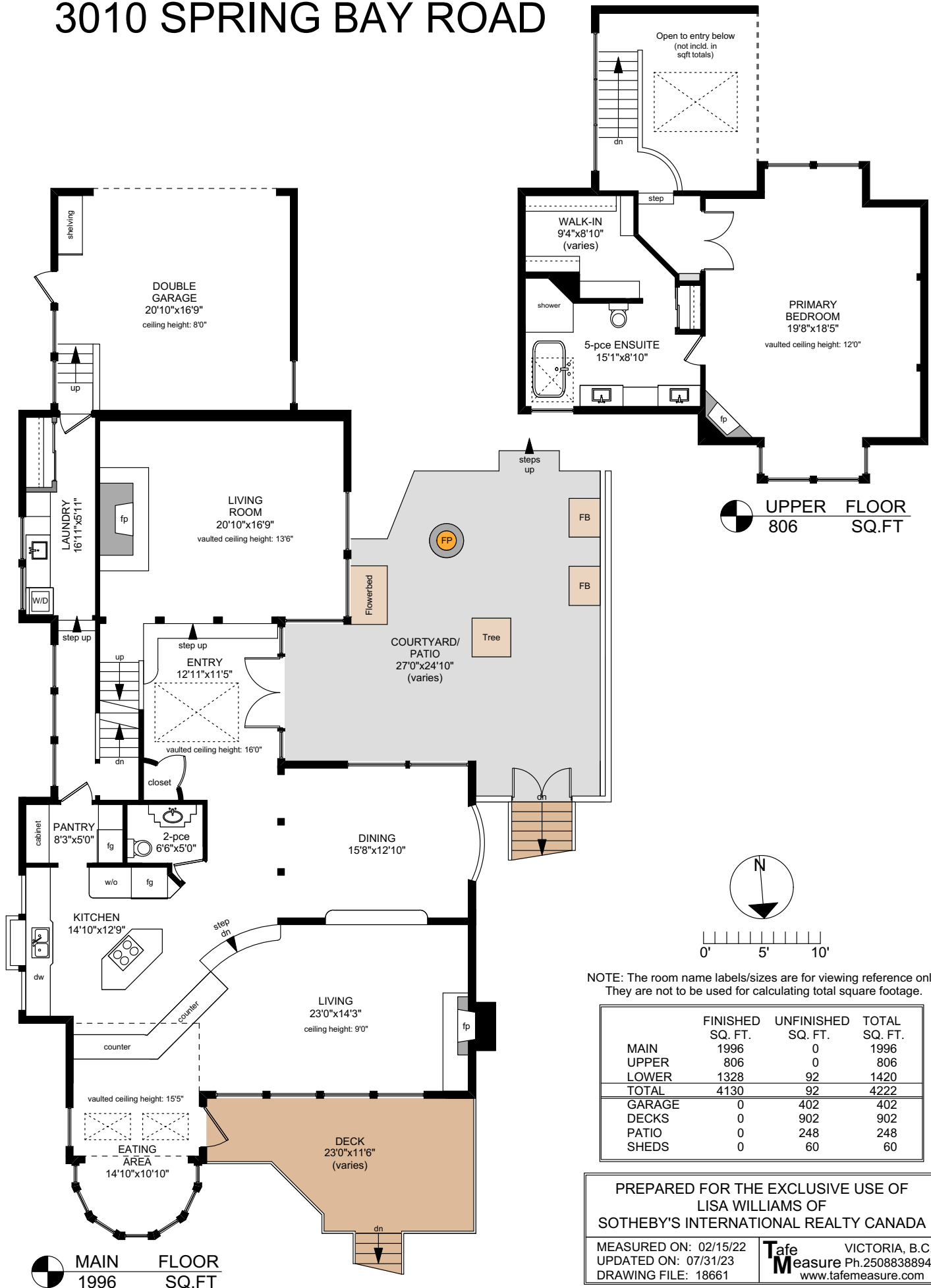


# 3010 SPRING BAY ROAD



	FINISHED SQ. FT.	UNFINISHED SQ. FT.	TOTAL SQ. FT.
MAIN	1996	0	1996
UPPER	806	0	806
LOWER	1328	92	1420
<b>TOTAL</b>	<b>4130</b>	<b>92</b>	<b>4222</b>
GARAGE	0	402	402
DECKS	0	902	902
PATIO	0	248	248
SHEDS	0	60	60

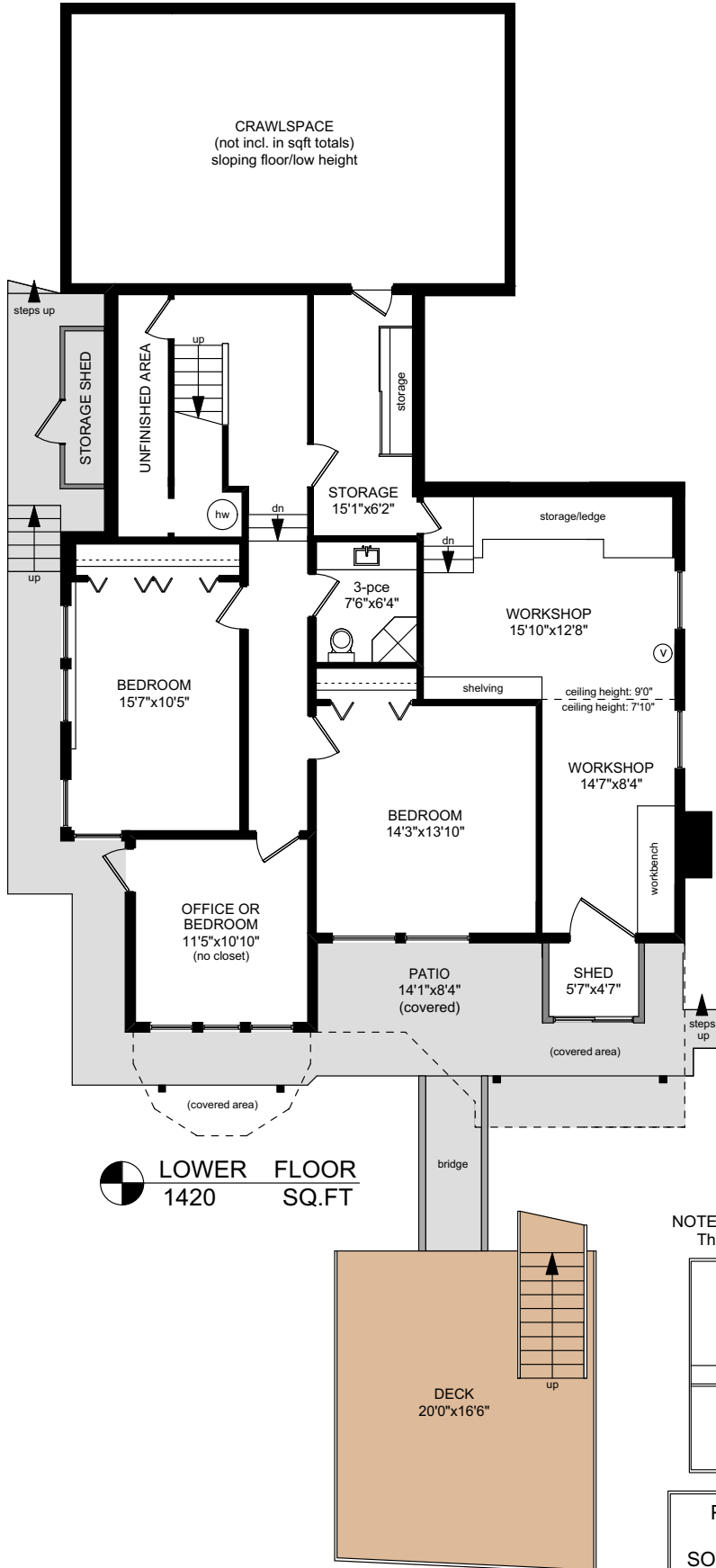
PREPARED FOR THE EXCLUSIVE USE OF  
LISA WILLIAMS OF  
SOTHEBY'S INTERNATIONAL REALTY CANADA

MEASURED ON: 02/15/22  
UPDATED ON: 07/31/23  
DRAWING FILE: 18661

**Tafe Measure** VICTORIA, B.C.  
Ph.2508838894  
www.tafemeasure.com

**MAIN FLOOR**  
1996 SQ.FT

# 3010 SPRING BAY ROAD



**LOWER FLOOR**  
1420 SQ.FT

NOTE: The room name labels/sizes are for viewing reference only. They are not to be used for calculating total square footage.

	FINISHED SQ. FT.	UNFINISHED SQ. FT.	TOTAL SQ. FT.
MAIN	1996	0	1996
UPPER	806	0	806
LOWER	1328	92	1420
<b>TOTAL</b>	<b>4130</b>	<b>92</b>	<b>4222</b>
GARAGE	0	402	402
DECKS	0	902	902
PATIO	0	248	248
SHEDS	0	60	60

PREPARED FOR THE EXCLUSIVE USE OF  
LISA WILLIAMS OF  
SOTHEBY'S INTERNATIONAL REALTY CANADA

MEASURED ON: 02/15/22  
UPDATED ON: 07/31/23  
DRAWING FILE: 18661

**Tafe Measure** VICTORIA, B.C.  
Ph.2508838894  
www.tafemeasure.com