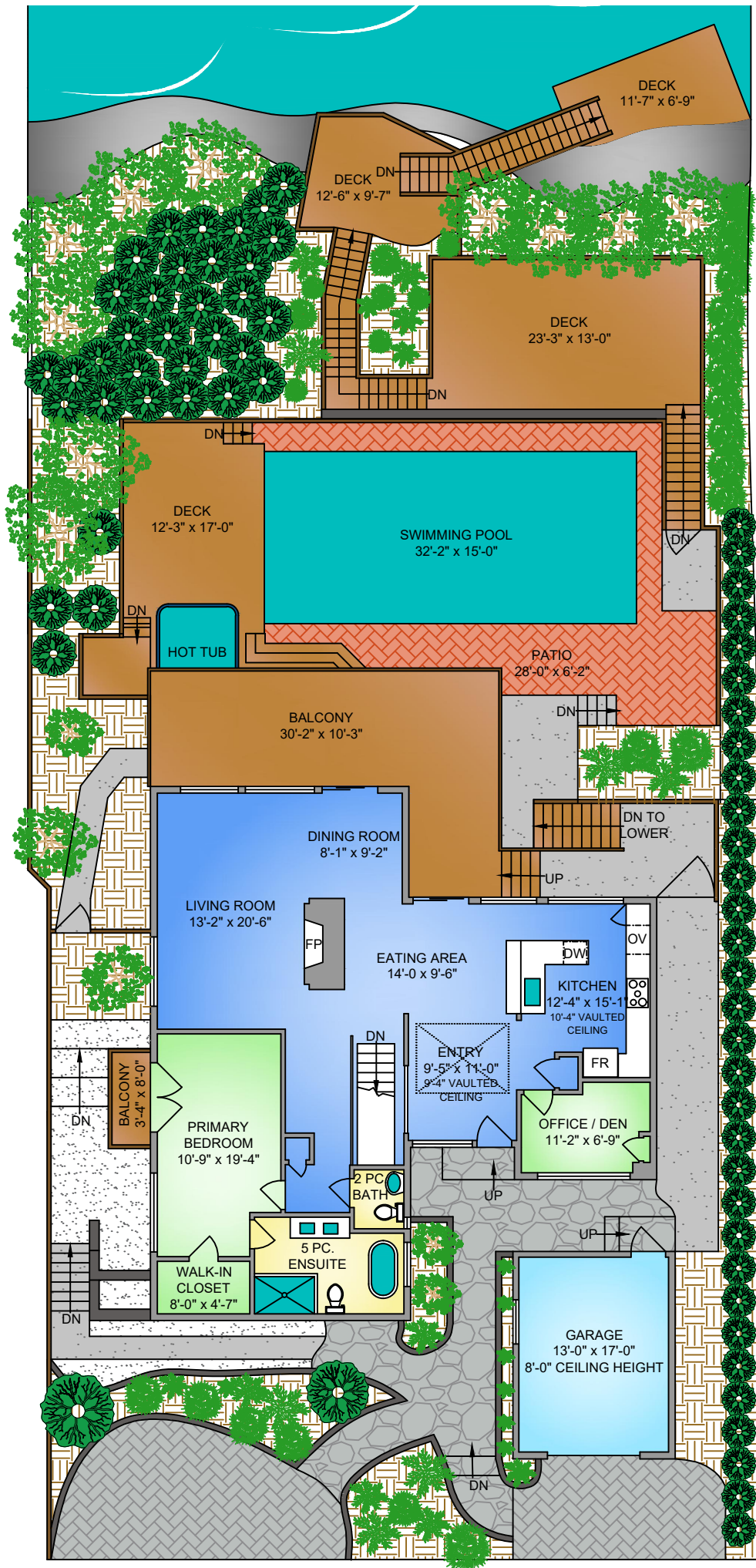
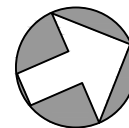


2705 SEA VIEW ROAD
MAIN FLOOR
1537 SQ. FT.
8' CEILING HEIGHT

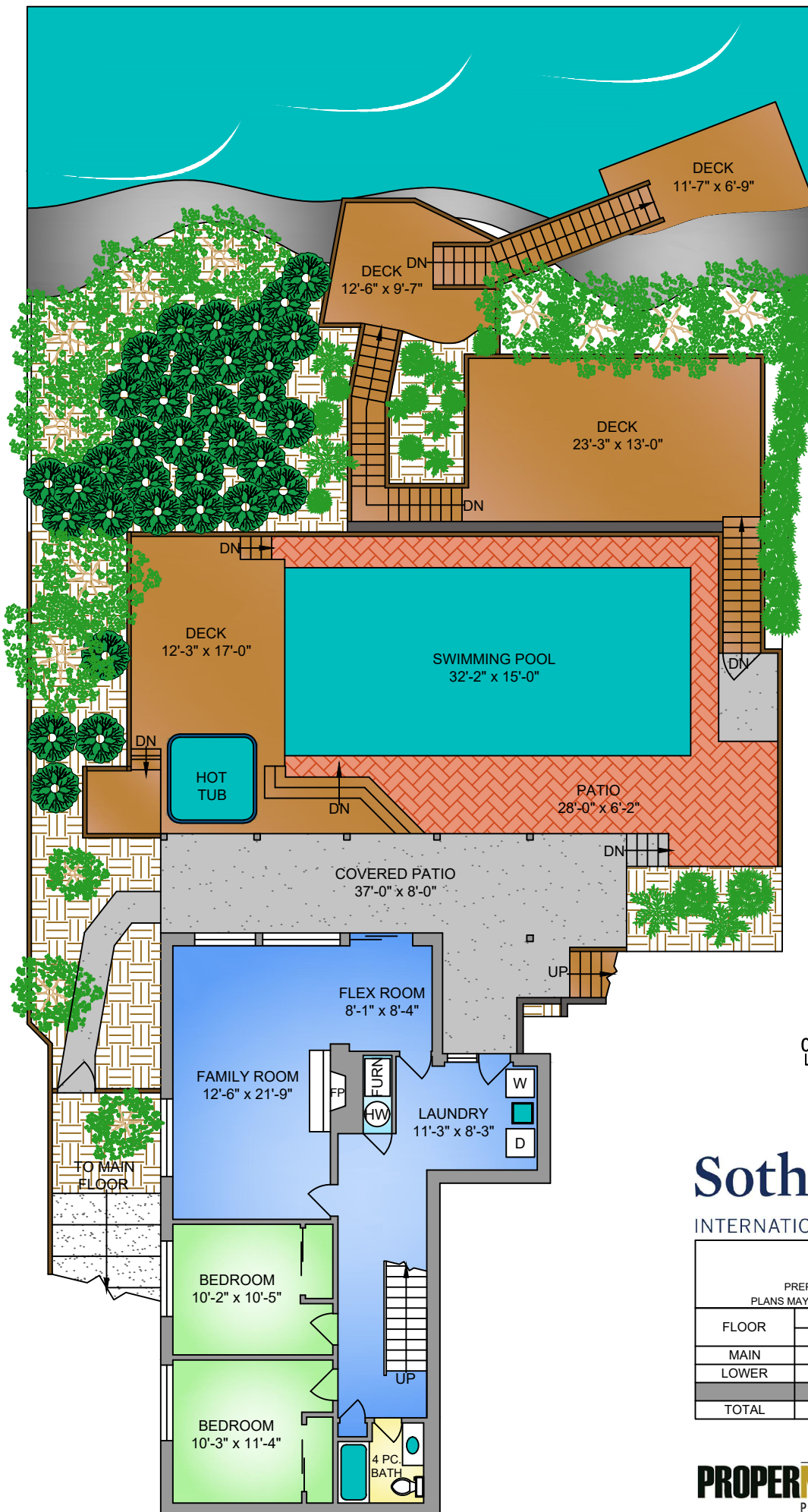


NORTH

0' 5' 10'
SCALE

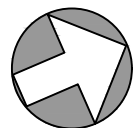
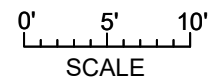


2705 SEA VIEW ROAD AUGUST 14, 2023			
PREPARED FOR THE EXCLUSIVE USE OF LISA WILLIAMS PLANS MAY NOT BE 100% ACCURATE, IF CRITICAL BUYER TO VERIFY.			
FLOOR	AREA (SQ. FT.)		
	FINISHED	GARAGE	DECK / PATIO
MAIN	1537	253	406
LOWER	1119	-	1152
TOTAL	2656	253	1558



LOWER FLOOR
1119 SQ. FT.
 8'-4" CEILING HEIGHT

NORTH



Sotheby's | **Canada**
 INTERNATIONAL REALTY

2705 SEA VIEW ROAD			
AUGUST 14, 2023			
PREPARED FOR THE EXCLUSIVE USE OF LISA WILLIAMS			
PLANS MAY NOT BE 100% ACCURATE, IF CRITICAL BUYER TO VERIFY.			
FLOOR	AREA (SQ. FT.)		
	FINISHED	GARAGE	DECK / PATIO
MAIN	1537	253	406
LOWER	1119	-	1152
TOTAL	2656	253	1558



250-884-9753
 matt@propermeasure.com
 www.propermeasure.com