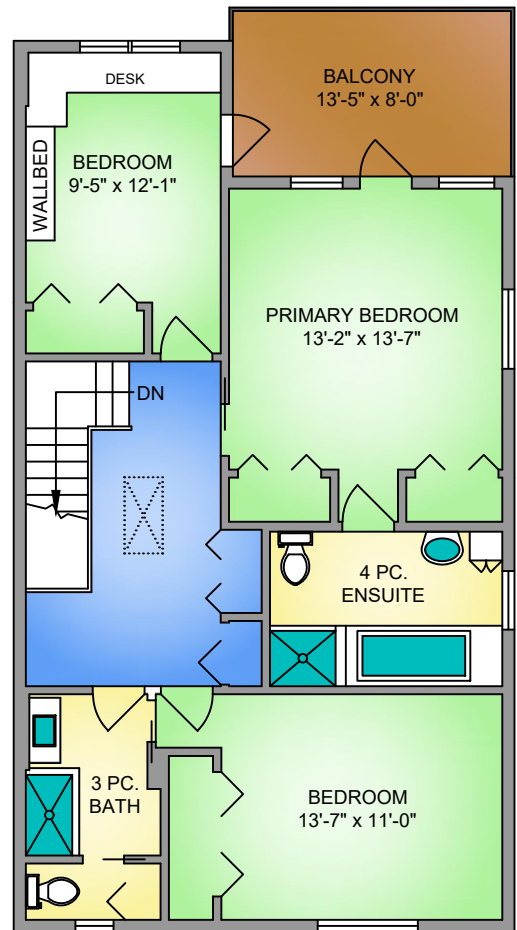
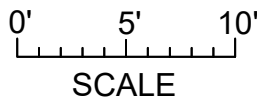
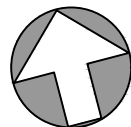


MAIN FLOOR
991 SQ. FT.
8'-4" CEILING HEIGHT

UPPER FLOOR
916 SQ. FT.
8' CEILING HEIGHT



NORTH



UNIT 4 - 2330 HARBOUR ROAD MAY 9, 2023 PREPARED FOR THE EXCLUSIVE USE OF LISA WILLIAMS PLANS MAY NOT BE 100% ACCURATE, IF CRITICAL BUYER TO VERIFY.			
FLOOR	AREA (SQ. FT.)		
	FINISHED	GARAGE	BALC. / PATIO
MAIN	991	299	438
UPPER	916	-	107
TOTAL	1907	299	545

