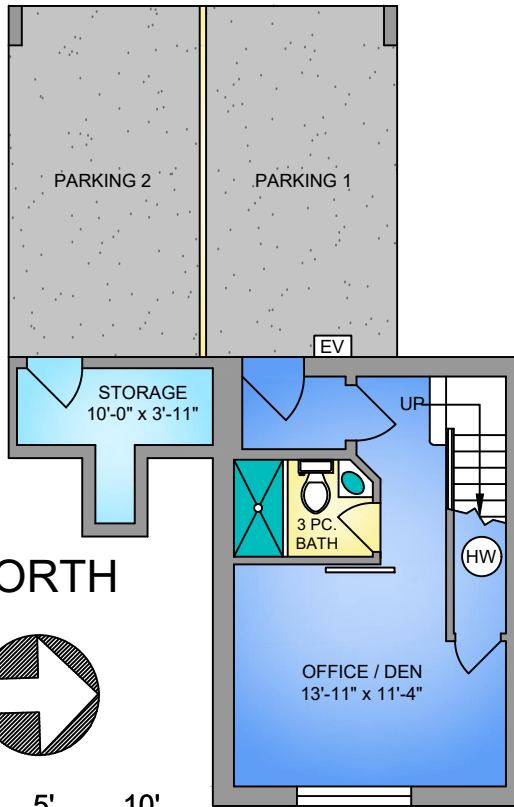


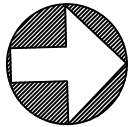
MAIN FLOOR
754 SQ. FT.
10' CEILING HEIGHT

UPPER FLOOR
775 SQ. FT.
16'-6" TO 8' CEILING HEIGHT

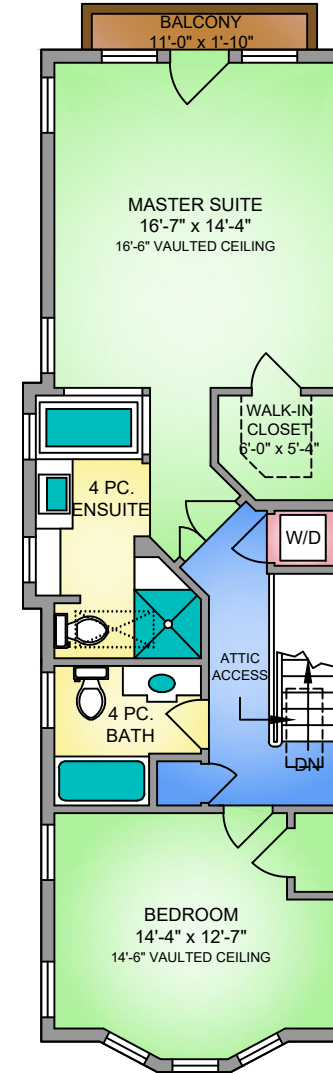
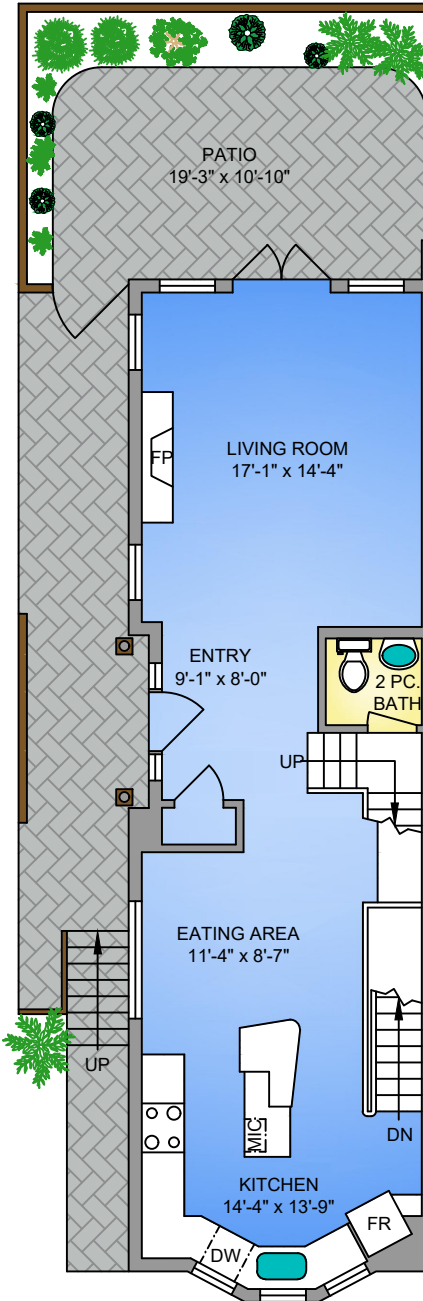
LOWER FLOOR
336 SQ. FT.
9' CEILING HEIGHT



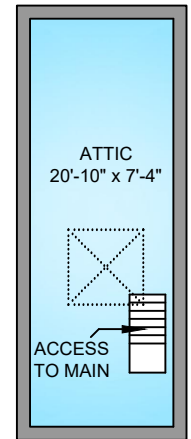
NORTH



0' 5' 10'
SCALE



ATTIC
174 SQ. FT.



FLOOR	AREA (SQ. FT.)			
	FINISHED	ATTIC	STORAGE	PATIO
MAIN	754	-	-	206
LOWER	336	-	60	-
UPPER	775	174	-	20
TOTAL	1865	174	60	226

UNIT 3 - 933 MEARS STREET

OCTOBER 12, 2021

PREPARED FOR THE EXCLUSIVE USE OF LISA WILLIAMS

PLANS MAY NOT BE 100% ACCURATE, IF CRITICAL BUYER TO VERIFY.

