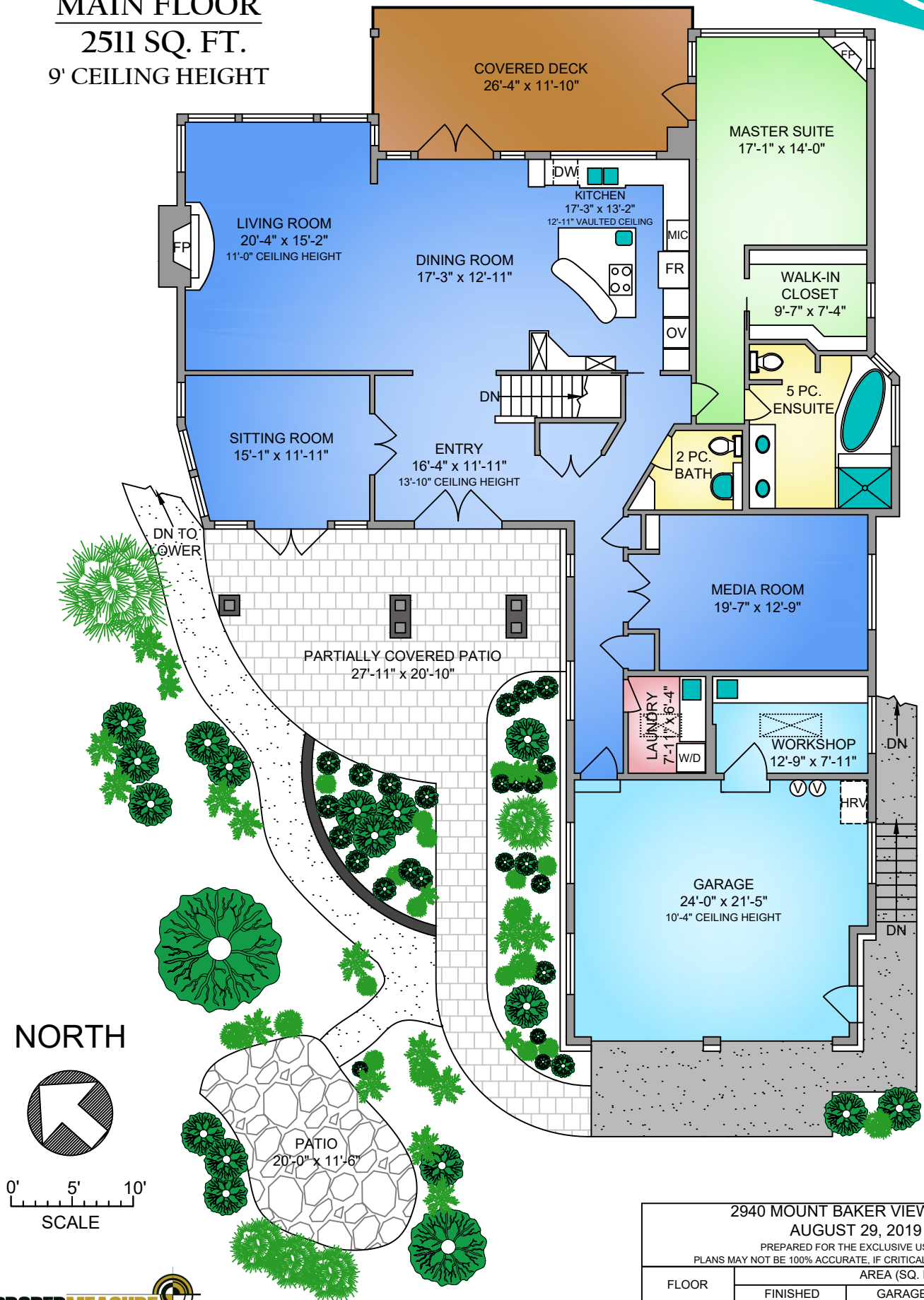
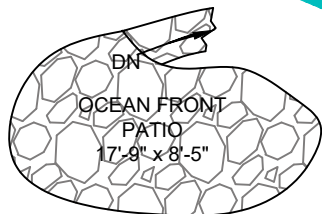


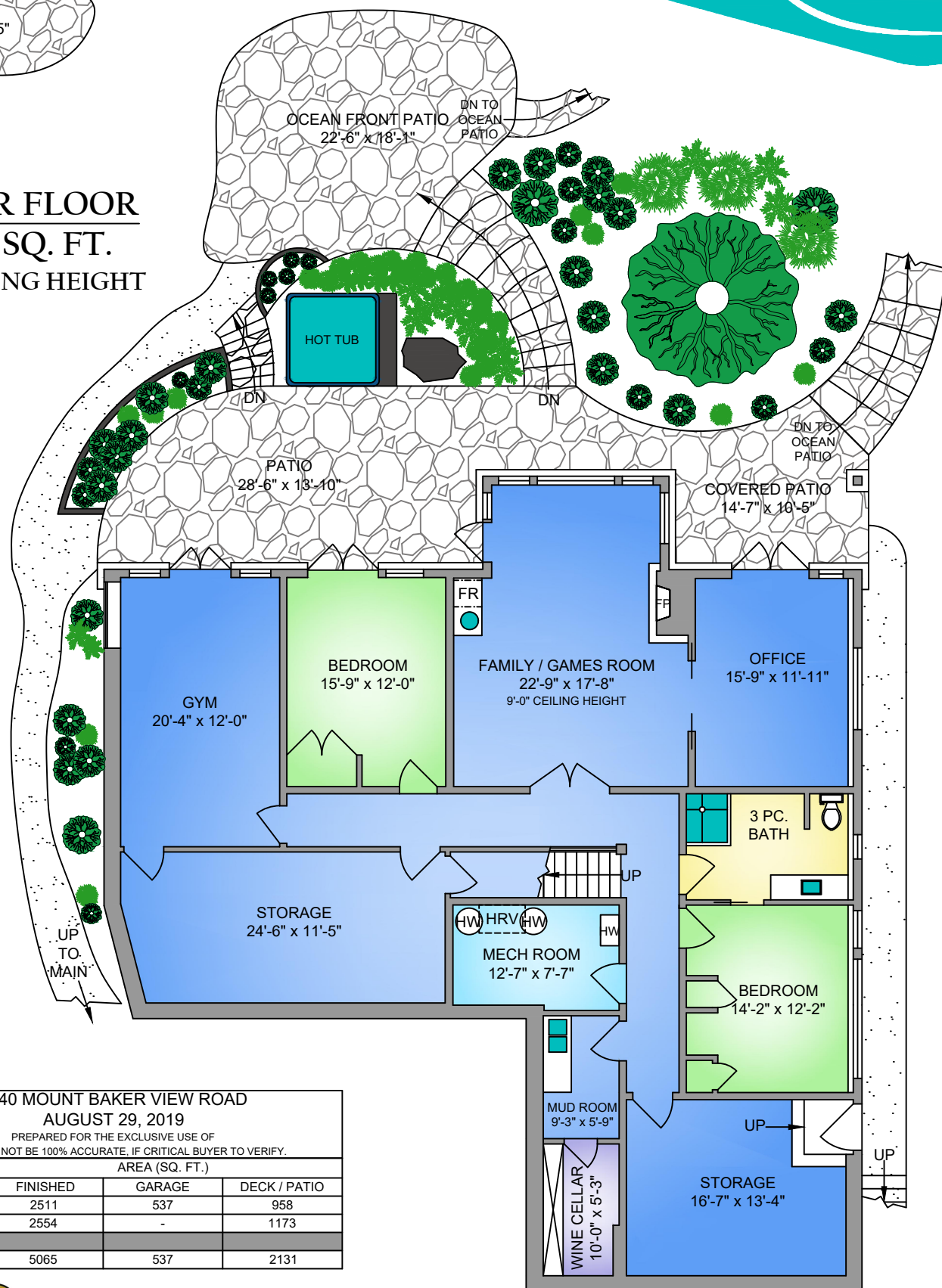
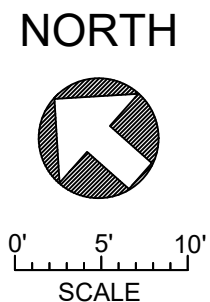
**MAIN FLOOR**  
**2511 SQ. FT.**  
**9' CEILING HEIGHT**



2940 MOUNT BAKER VIEW ROAD			
AUGUST 29, 2019			
PREPARED FOR THE EXCLUSIVE USE OF			
PLANS MAY NOT BE 100% ACCURATE, IF CRITICAL BUYER TO VERIFY.			
FLOOR	AREA (SQ. FT.)		
	FINISHED	GARAGE	DECK / PATIO
MAIN	2511	537	958
LOWER	2554	-	1173
TOTAL	5065	537	2131



# LOWER FLOOR 2554 SQ. FT. 9'-0" CEILING HEIGHT



2940 MOUNT BAKER VIEW ROAD AUGUST 29, 2019 PREPARED FOR THE EXCLUSIVE USE OF PLANS MAY NOT BE 100% ACCURATE, IF CRITICAL BUYER TO VERIFY.			
FLOOR	AREA (SQ. FT.)		
	FINISHED	GARAGE	DECK / PATIO
MAIN	2511	537	958
LOWER	2554	-	1173
TOTAL	5065	537	2131