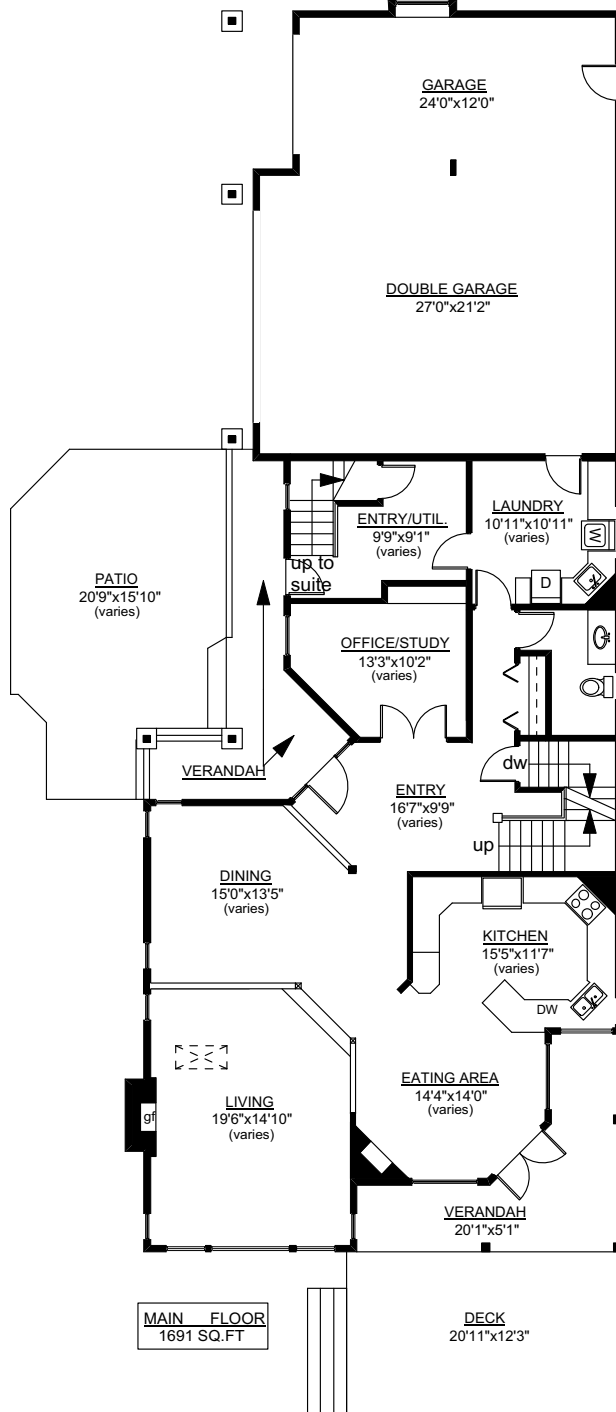
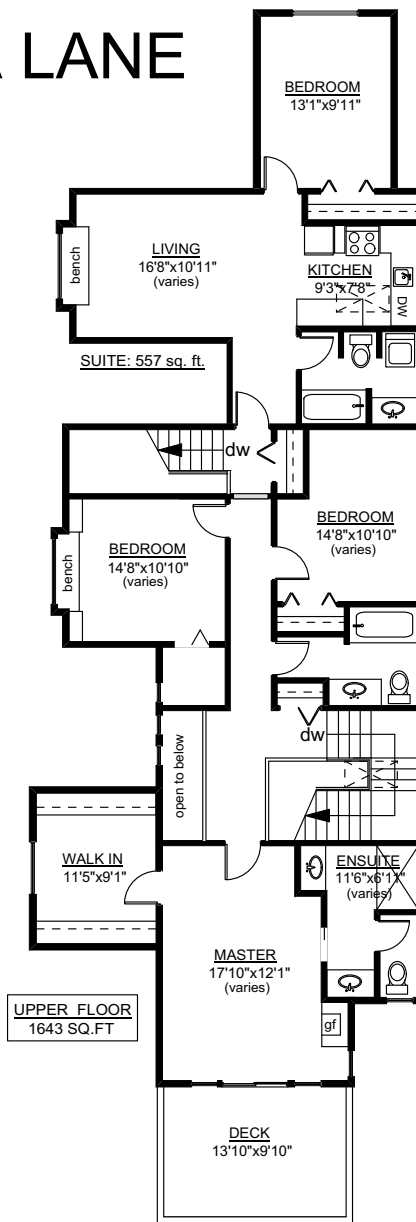


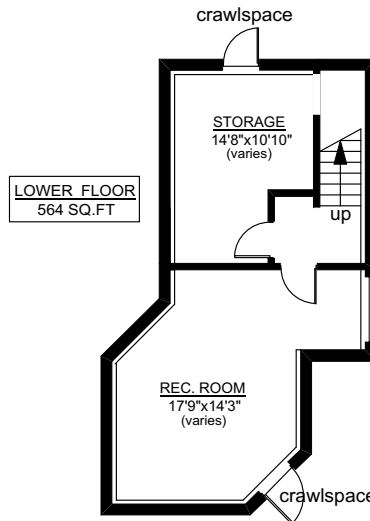
1556 MILEVA LANE



MAIN FLOOR
1691 SQ.FT

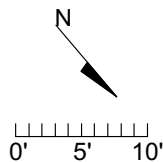


UPPER FLOOR
1643 SQ.FT



LOWER FLOOR
564 SQ.FT

	FINISH SQ. FT.	UNFINISH SQ. FT.	TOTAL SQ. FT.
MAIN	1691	0	1691
UPPER	1643	0	1643
LOWER	564	0	564
TOTAL	3898	0	3898
GARAGE	0	914	914
VERANDAH	0	328	328
DECKS	0	389	389
PATIO	0	369	369



PREPARED FOR THE EXCLUSIVE USE
LISA WILLIAMS OF
SOTHEBY'S INTERNATIONAL REALTY CANADA

MEASURED ON: 01/14/04
DRAWING FILE: 15724

Tameasure
VICTORIA, B.C.
Ph. 883-8894