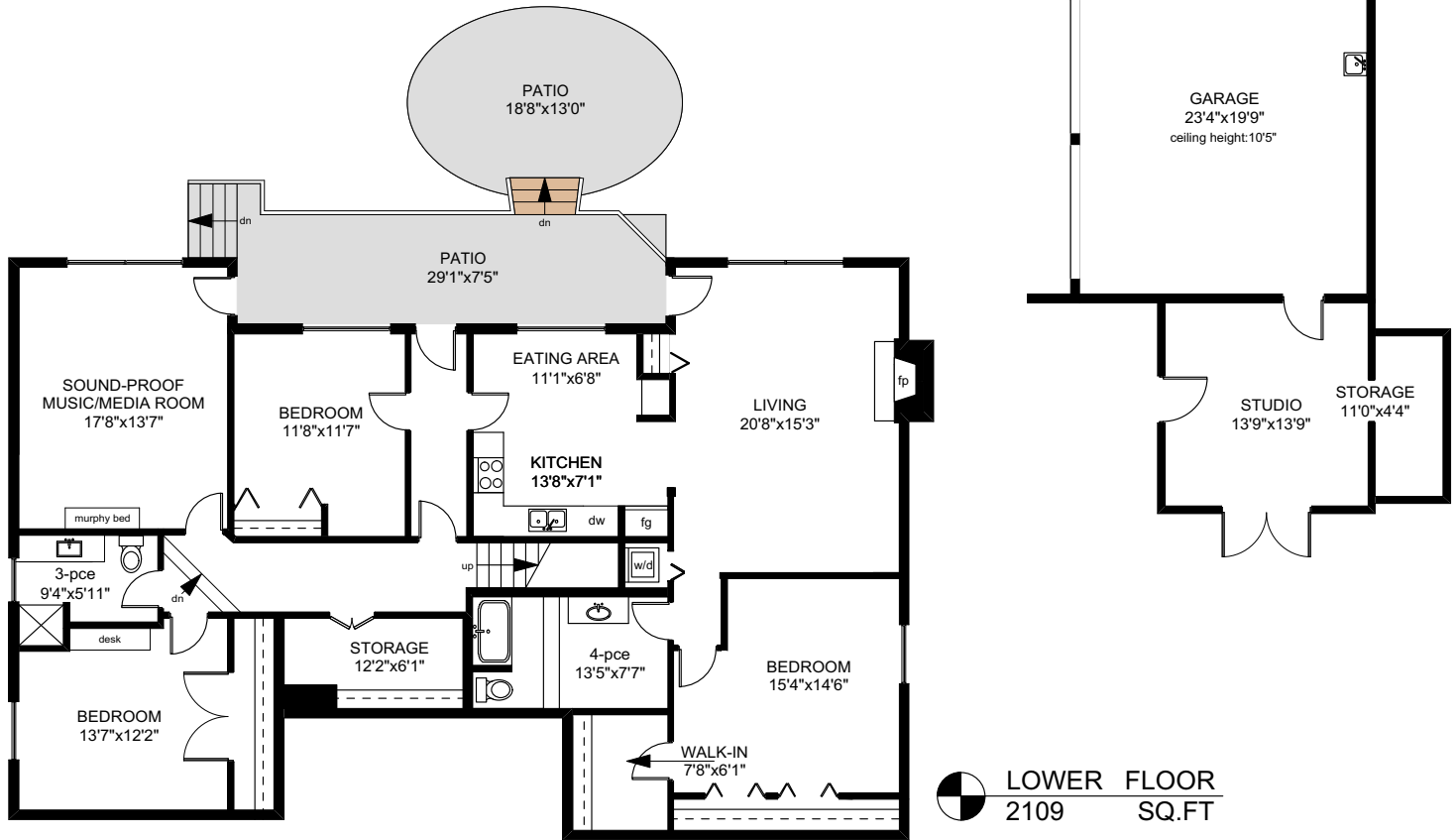
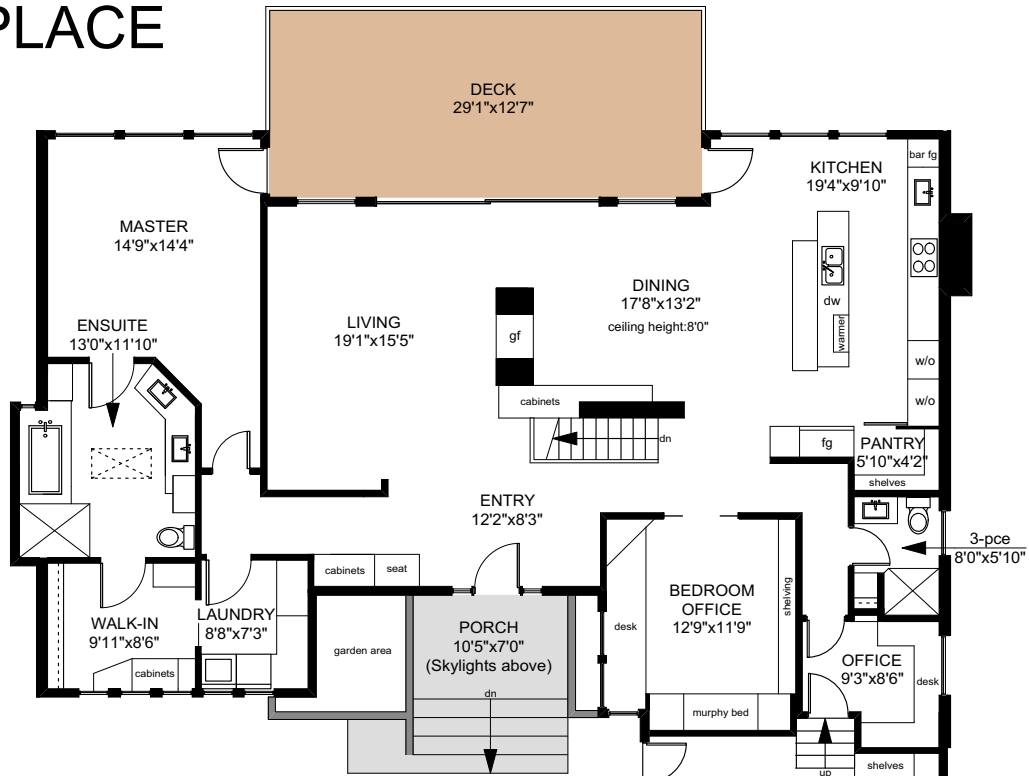


1737 ALGOA PLACE



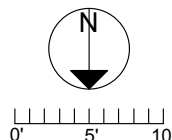
MAIN
2442

FLOOR
SQ.FT



LOWER FLOOR
2109 SQ.FT

	FINISHED SQ. FT.	UNFINISHED SQ. FT.	TOTAL SQ. FT.
MAIN	2442	0	2442
LOWER	2109	0	2109
TOTAL	4551	0	4551
<hr/>			
GARAGE	0	513	513
PATIOS	0	404	404
DECK	0	366	366



PREPARED FOR THE EXCLUSIVE USE
LISA WILLIAMS OF
SOTHEBY'S INTERNATIONAL REALTY CANADA

MEASURED ON: 07/10/17
DRAWING FILE: 16009C

Tafe Measure
VICTORIA, B.C.
Ph. 883.8894

NOTE: This floor plan is provided by Sotheby's International Realty as a convenient reference only, and is not to be relied upon as accurate. Prospective Buyers must satisfy themselves not only of the actual measurements, but also to the status of any finished space shown on this floor plan, specifically in relation to minimum ceiling height for habitable rooms required by the BC Building Code, allowable finished floor area in relation to current zoning, and determination if space was developed with necessary municipal permits.