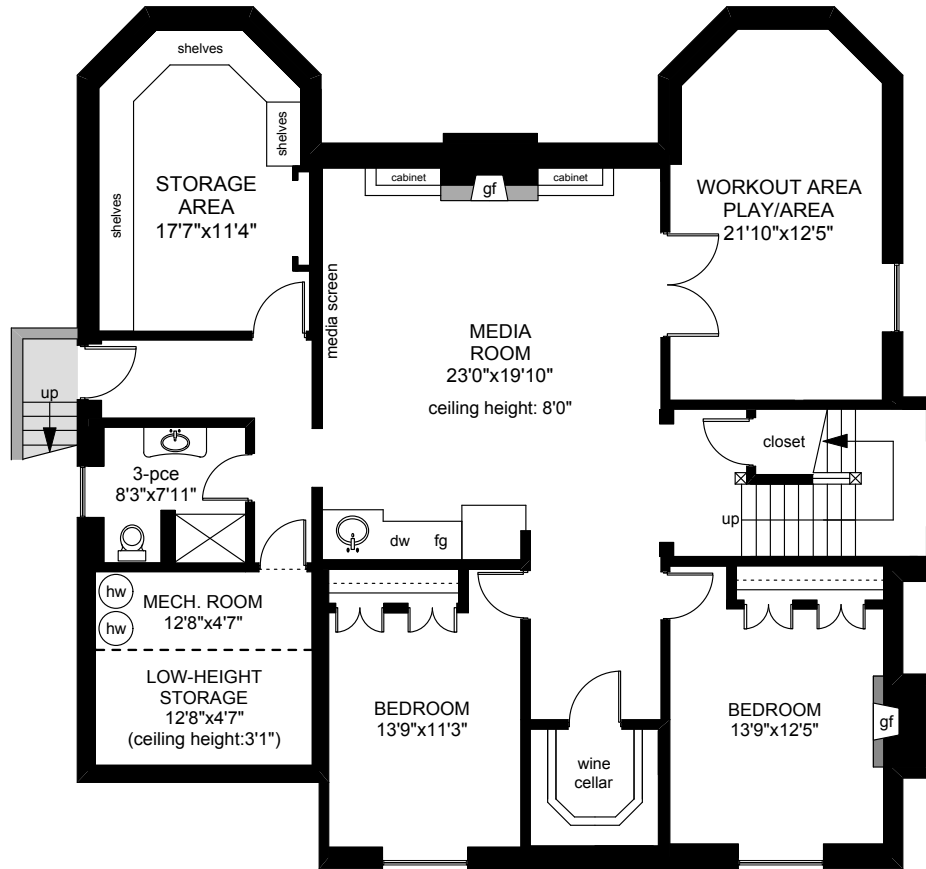

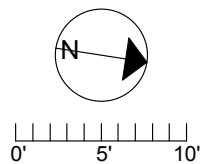


498 NEWPORT AVENUE



 LOWER FLOOR
 2215 SQ.FT

	FINISHED SQ. FT.	UNFINISHED SQ. FT.	TOTAL SQ. FT.
MAIN	2123	0	2123
UPPER	1972	0	1972
LOWER	2035	180	2215
TOTAL	6130	180	6310
GARAGE	0	508	508
PATIOS	0	1562	1562
VERANDAH	0	128	128
BALCONY	0	92	92
STUDIO	0	123	123



PREPARED FOR THE EXCLUSIVE USE OF
 LISA WILLIAMS OF
 SOTHEBY'S INTERNATIONAL REALTY CANADA

MEASURED ON: 03/16/10
 05/18/17
 DRAWING FILE: 15089fm

Tafe Measure
 VICTORIA, B.C.
 Ph. 883.8894
 www.tafemeasure.com