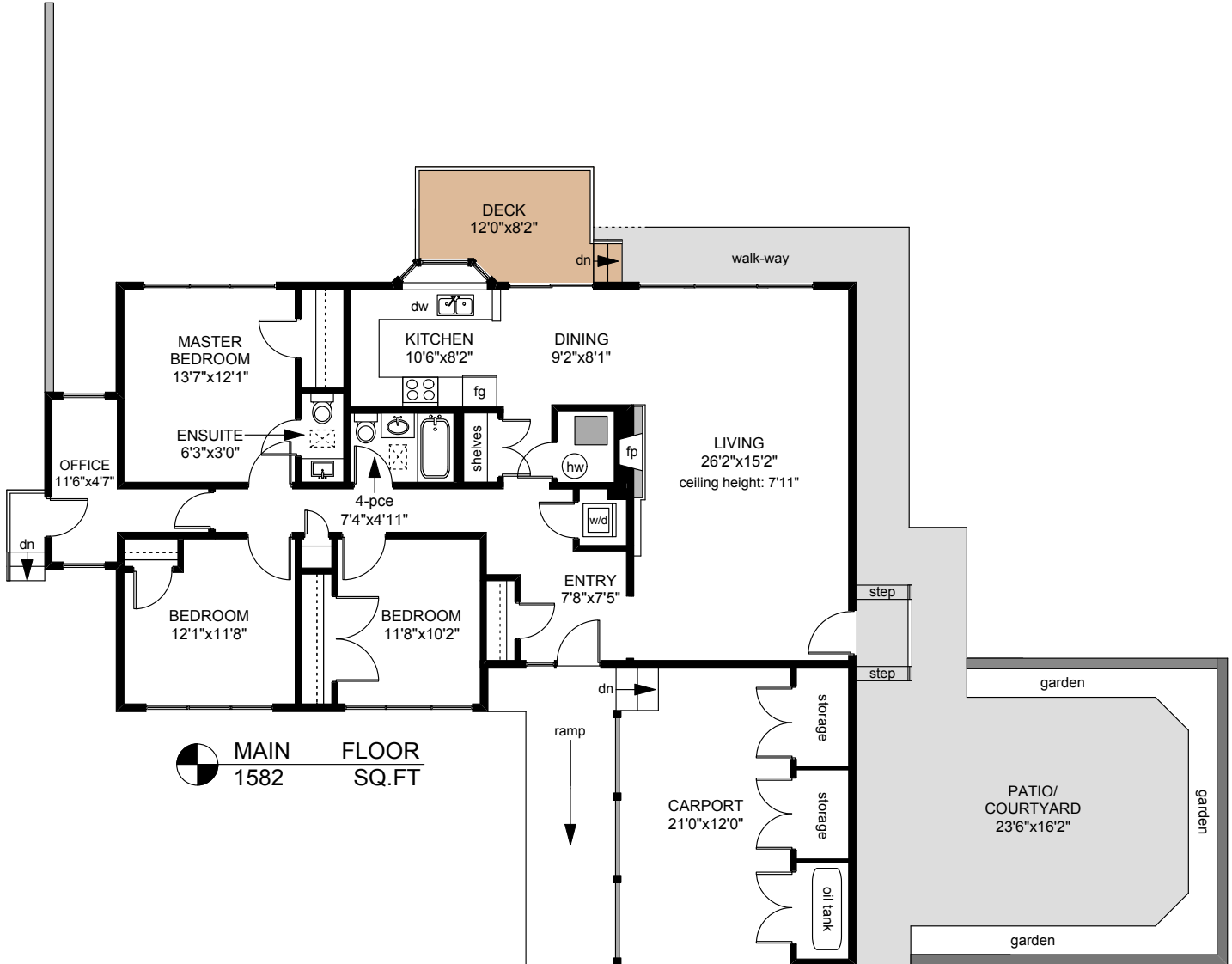
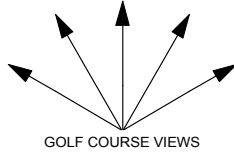
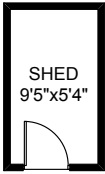
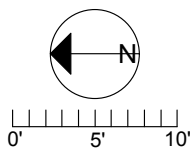


605 NEWPORT AVENUE



	FINISHED SQ. FT.	UNFINISHED SQ. FT.	TOTAL SQ. FT.
MAIN	1582	0	1582
TOTAL	1582	0	1582
CARPORT	0	252	252
STORAGE	0	98	98
PATIO	0	388	388
DECK	0	98	98
SHED	0	62	62



PREPARED FOR THE EXCLUSIVE USE OF
SYLVIA THERRIEN,
PERSONAL REAL ESTATE CORPORATION
OF NEWPORT REALTY

MEASURED ON:
03/10/09 & 02/25/15
DRAWING FILE: 12536

Tafe Measure VICTORIA, B.C.
Ph. 883.8894
www.tafemeasure.com

NOTE: This floor plan is provided by Newport Realty Ltd. as a convenient reference only, and is not to be relied upon as accurate. Prospective Buyers must satisfy themselves not only of the actual measurements, but also to the status of any finished space shown on this floor plan, specifically in relation to minimum ceiling height for habitable rooms required by the BC Building Code, allowable finished floor area in relation to current zoning, and determination if space was developed with necessary municipal permits.